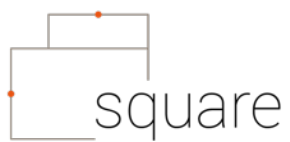


User manual square

viveroo 



viveroo GmbH
Wewelsburger Straße 4
33154 Salzkotten
Germany
www.viveroo.de



REV20160408

Safety information



! WARNING

Please read the assembly instructions included carefully. Please read this square user manual completely before using your square. Please follow the instructions and recommendations to ensure proper use and maximum enjoyment.

Safety information

square and all square mounting sets are intended for use in enclosed and dry living spaces.

The following conditions must be provided:

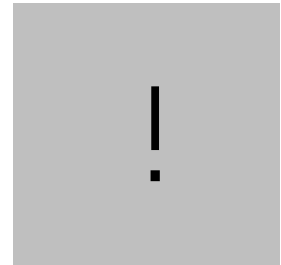
- Operating temperature between 0° C (32° F) and 35° C (95° F).
- Relative humidity (during use): 20 % to 90 %, non-condensing.
- No external environmental influences such as oil, chemicals, salt, extensive dust, etc.

Installation, service or repairs, if necessary, may only be performed by authorized persons.

The installer is responsible for selecting the proper mounting location and safe installation of square. This also applies to installation in movable parts, such as doors. The installer is responsible for performing and documenting all necessary safety tests.

All electrical installation work may only be conducted by authorized, trained electricians, always adhering to the general rules and regulations applying to electrical installation.

Should it become apparent that safe operation of square is not assured, then square must immediately be taken out of service and secured against potential misuse. If the square functions are limited, blocked or disabled, if an unusual odor is present, if noises such as scratching are audible or damage is visible, safe operation can no longer be guaranteed.



Technical Data



Product contents

- User manual square
- square

Please note! External cable, power supply and mounting screws are included in square MountingSet.

Compatibility

Electrical operation of square is permitted only in connection with square MountingSet and power supply and cable included in the Mounting Set. Operation of square without a MountingSet will lead to immediate loss of guarantee and warranty.

Measurements

Measurements design cover	364 x 294
Depth square	36
Size of opening (for furniture installation)	367 x 296,5
Size of opening (for flush-mounted box)	344 x 271
Installation depth (for furniture installation)	36
Installation depth (for flush-mounted box)	76

Weight in kg

square	3,8
--------	-----

Electrical connections

Low voltage	12 Vdc
Power consumption	18 Watt

Removal from power supply

square may be removed from the power supply via the circuit breaker in the respective rooms.

CE & Co.

All squares have CE certification. square is quality "Made in Germany". We use only high quality parts and components produced by market leaders. square customers are proud of their iPad Garage.



Technical changes and mistakes are excepted.
iPad is a registered trademark of Apple Inc.

Functions

Click It! Opening the iPad shelf

Open the iPad resting shelf by using the square button. Now you can remove or insert your iPad.

! IMPORTANT: square can be either installed vertically or horizontally. The suspension of the resting shelf has been set to wall position. For horizontal (i.e. table) or diagonal (i.e. lectern, teacher's desk, control panel) installation, special adapter sets are available on request.



Care and Cleansing

Cleanse your square as needed with a soft micro fiber cloth and clear water only. Dampen the micro fiber cloth and wipe the surfaces gently. If necessary, you may remove the rubber pads (see "Mounting"). The glass surfaces of DeepBlack and ClearWhite may also be cleaned with standard glass cleaners.

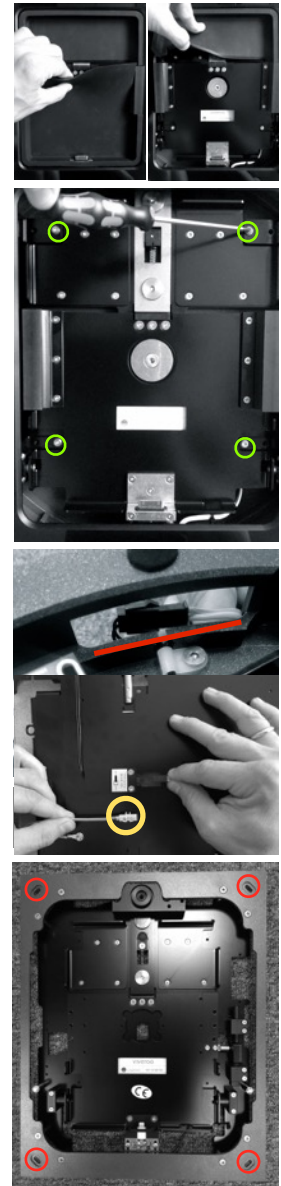
! WARNING: The interior of the square must remain dry. To ensure this, use only a damp cloth for cleansing.

! WARNING: Never scratch, scrape or scrub square surfaces with abrasive materials.

Installation

Use the corresponding MountingSet to install your square. All MountingSets come with specific mounting instructions.

- Step 1** Carefully remove the lower rubber pad first and then the upper rubber pad.
Proceed as follows:
- Open the iPad resting shelf by pressing the button down completely. If the square is in a horizontal position, the shelf must be gently lifted manually.
 - Lift the lower rubber pad starting from the center of the square (see photo). When the inlay has reached approximately a 45° angle it can be carefully pulled out.
 - Close the resting shelf and gently pull the upper rubber cushion out.
- Step 2** Carefully remove the four screws on the cover (see photo - green).
! **IMPORTANT:** Hold cover tightly when removing the final screw to avoid damage from falling down.
- Step 3** Carefully remove the cover by lifting it towards you and place the cover in a safe spot.
- Step 4** Plug the connecting cable from the MountingSet into the square plug contact.
! **WARNING:** When inserting the square, make sure that the connecting cable is not pinched or pulled, as this may damage the cable.
! **WARNING:** If a power supply is located close to the square, please connect the protective grounding wire (yellow) to the protective conductor of the power supply. (for example InWall MountingSet)
- Step 5** The various fastening points for the square are easily identifiable (red). Using the screws included in the MountingSet, fasten the square.
! **IMPORTANT:** Please follow the instructions included with the MountingSet.
- Step 6** Place the cover on the square. The correct positioning is dictated by the button. Thread the cover into place there. Fasten the cover with the four screws and put the rubber pads back in place.



Warranty



Warranty

square comes with a two year warranty from date of purchase by the original end customer, unless the device was repaired or replaced during the warranty period. In this case, the warranty is valid until the end of the regular two year warranty or six months following the repair/replacement, whichever comes first.

Warranty claims and verification

Should your square for any reason not perform as expected, please contact your dealer and provide the original invoice with serial number as well as a brief description of your complaint.

Warranty claims and verification

The following devices are excluded from the warranty
Devices with damages caused by:

- acts of nature,
- misuse, including but not limited to disregarding the user manual and mounting instructions,
- inappropriate handling,
- connection to an incorrect power supply,
- repairs or attempted repairs by unauthorized persons,
- use of the device in connection with third party products,
- devices on which the serial number of the producer has been changed, deleted, removed or made illegible.

